

Distribution and consumption of fluorite and translucent beads in the Iberian peninsula from 6th to 2nd millennia BC

Distribución y consumo de cuentas de fluorita y translúcidas en la península ibérica del VI al II milenios ANE

José Ángel Garrido-Cordero¹, Carlos P. Odriozola, Ana C. Sousa, Victor S. Gonçalves and João Luís Cardoso

Supplementary file

Archivo suplementario

SF4 List and photographs of the items here studied

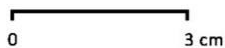
¹ Dpto. de Prehistoria y Arqueología. Universidad de Sevilla. E-mail: jgarrido8@us.es

Casa da Moura (Óbidos, Leiria)



CMR-436

Poço Velho (Cascais, Lisboa)



CCG-159



IGM-356

Alto da Feteira (Pombal, Leiria)



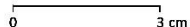
TOP-94

Leceia (Oeiras, Lisboa)

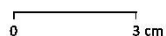


LC93-TA-C3

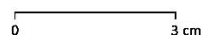
Vila Nova de São Pedro (Azambuja, Lisboa)



ARQ-VNSP-964-46



ARQ-VNSP-964-64



ARQ-VNSP-964-4

Lapa do Bugio (Sesimbra, Setúbal)

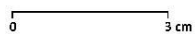


LB-0011-3

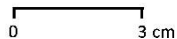


LB-0011-4

São Paulo 2 (Almada, Setúbal)

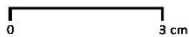


MMA-5743



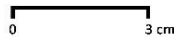
MMA-6862

Anta 2 do Vidigal (Montemor-o-Novo, Évora)



2006.23.4

Olival da Pega 1 (Reguengos de Monsaraz, Évora)



21815A

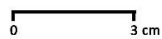


21815B

Anta Grande da Comenda da Igreja (Montemor-o-Novo, Évora)



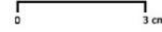
2011.54.278



985.51.617



985.51.670



985.51.684

Anta Grande da Comenda da Igreja (Montemor-o-Novo, Évora)



0 3 cm

985.51.618



0 3 cm

2011.54.73

Quinta do Anjo (Palmela, Setúbal)



0 3 cm

QAP-199

Gruta 2 de Alapraia (Cascais, Lisboa)



0 3 cm

AL-35-G11

Tituaria (Mafra, Lisboa)



0 3 cm

998.16.42

Trigache 3 (Odivelas, Lisboa)



0 3 cm

179.91

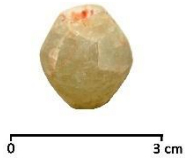
Anta dos Penedos de São Miguel (Crato, Portalegre)



0 3 cm

PSM-112

Gruta da Marmota (Alcanena, Santarém)

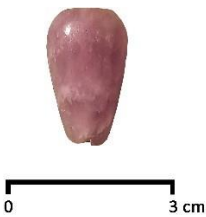


MRO/S-25

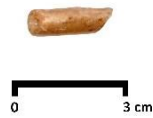


MMT-26

Buraca da Moura da Reixaldia (Torres Novas, Santarém)



MMTN-2215-1



MMTN-2215-2

Calatras IV (Alta) (Alcobaça, Leiria)



220

Cabeço da Ministra (Alcobaça, Leiria)



25992-1



25992-2

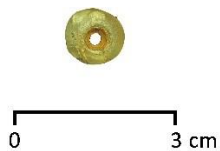


220-1



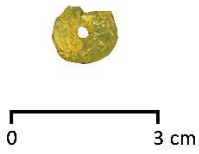
220-2

El Pozuelo 1 (Zalamea la Real, Huelva)



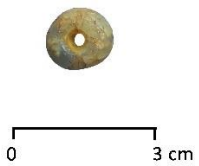
IG-313/51

El Pozuelo 5 (Zalamea la Real, Huelva)



N/A

El Pozuelo 7 (Zalamea la Real, Huelva)



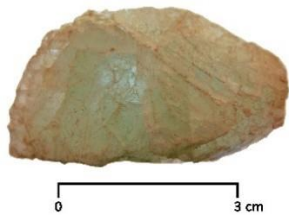
1848

Los Gabrieles 6 (Valverde del Camino, Huelva)



IG-3486/22

Cueva del Vaquero (Alcalá de Guadaíra, Sevilla)



-

“La Emisora” (Valencina de la Concepción, Sevilla)



VA-0033

Cueva de los Mármoles (Priego de Córdoba, Córdoba)



MA-528

Los Millares 12 (Santa Fé de Mondújar, Almería)



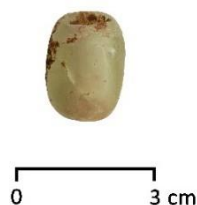
-

La Veguilla I (Torrejón de Alba, Salamanca)



-

La Velilla (Osorno, Palencia)



-

Cau de l'Olivar d'en Margall (Torroella del Montgrí, Girona)



16477-7



16477-17



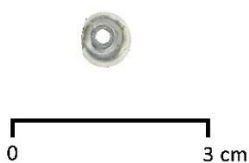
16477-18

Anta Grande do Zambujeiro (Nossa Senhora da Tourega, Évora)



ME-3760

Fuente Álamo (Cuevas de Almanzora, Almería)



DJ83773